


# WATER SHUT-OFF DEVICES

Protect Your Home  
Against Leaks

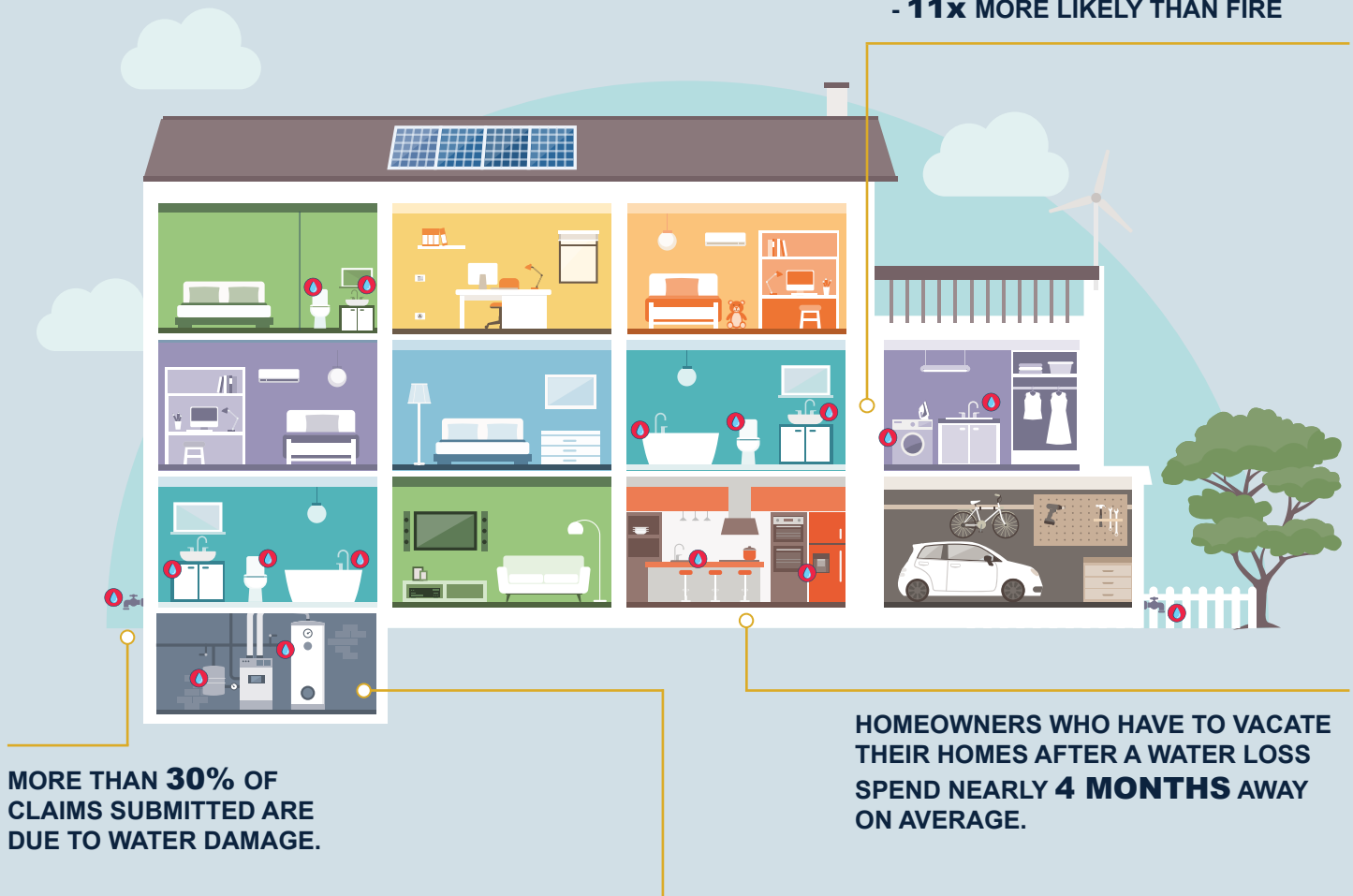
**HEADS UP HOMEOWNERS:** No one likes to imagine water damage in their home, but it happens all the time and often leads to inconvenient and expensive repairs. Your insurance policy may help cover the cost of damage, but your time is valuable, and irreplaceable belongings may be lost.

A water shut-off device can automatically detect leaks and shut off the main water supply, reducing the damage to your home. See the  in the rooms below for possible sources of leaks.

## WATER DAMAGE BY THE NUMBERS

**WATER DAMAGE CLAIMS ARE:**

- **5x** MORE LIKELY THAN THEFT
- **11x** MORE LIKELY THAN FIRE



**Phyn and Leak Defense System™** offers savings on devices and installation for Cincinnati policyholders. To learn more, visit [phyn.com](http://phyn.com) and [leakdefensesystem.com](http://leakdefensesystem.com).

Contact your local independent agent for questions about your insurance coverage.

<sup>1</sup>Statistics provided by CIC PARM and CIC Claims based on data collected between 2017 to 2021. a This is not a policy. For a complete statement of the coverages and exclusions, please see the policy contract. Products are not available in all states. "The Cincinnati Insurance Companies", "Cincinnati Insurance" and "Cincinnati" refer to member companies of the insurer group providing property and casualty coverages through The Cincinnati Insurance Company or one of its wholly owned subsidiaries – The Cincinnati Indemnity Company or The Cincinnati Casualty Company. Each insurer has sole financial responsibility for its own products. Not all subsidiaries operate in all states. Do not reproduce or post online, in whole or in part, without written permission.  
© 2022 The Cincinnati Insurance Company. 6200 S. Gilmore Road, Fairfield, OH 45014-5141. Mailing address: P.O. Box 145496, Cincinnati, OH 45250-5496.

This loss control information is advisory only. Contact your local, independent insurance agent for coverage advice and policy service.  
© Copyright 2021 The Cincinnati Insurance Companies. All rights reserved. The selection of a particular service provider is the independent choice of the policyholder. Service providers are not affiliated with The Cincinnati Insurance Companies. Cincinnati and its employees make no warranties and assume no liability for services, products or loss control measures provided by service providers.



Everything Insurance Should Be®