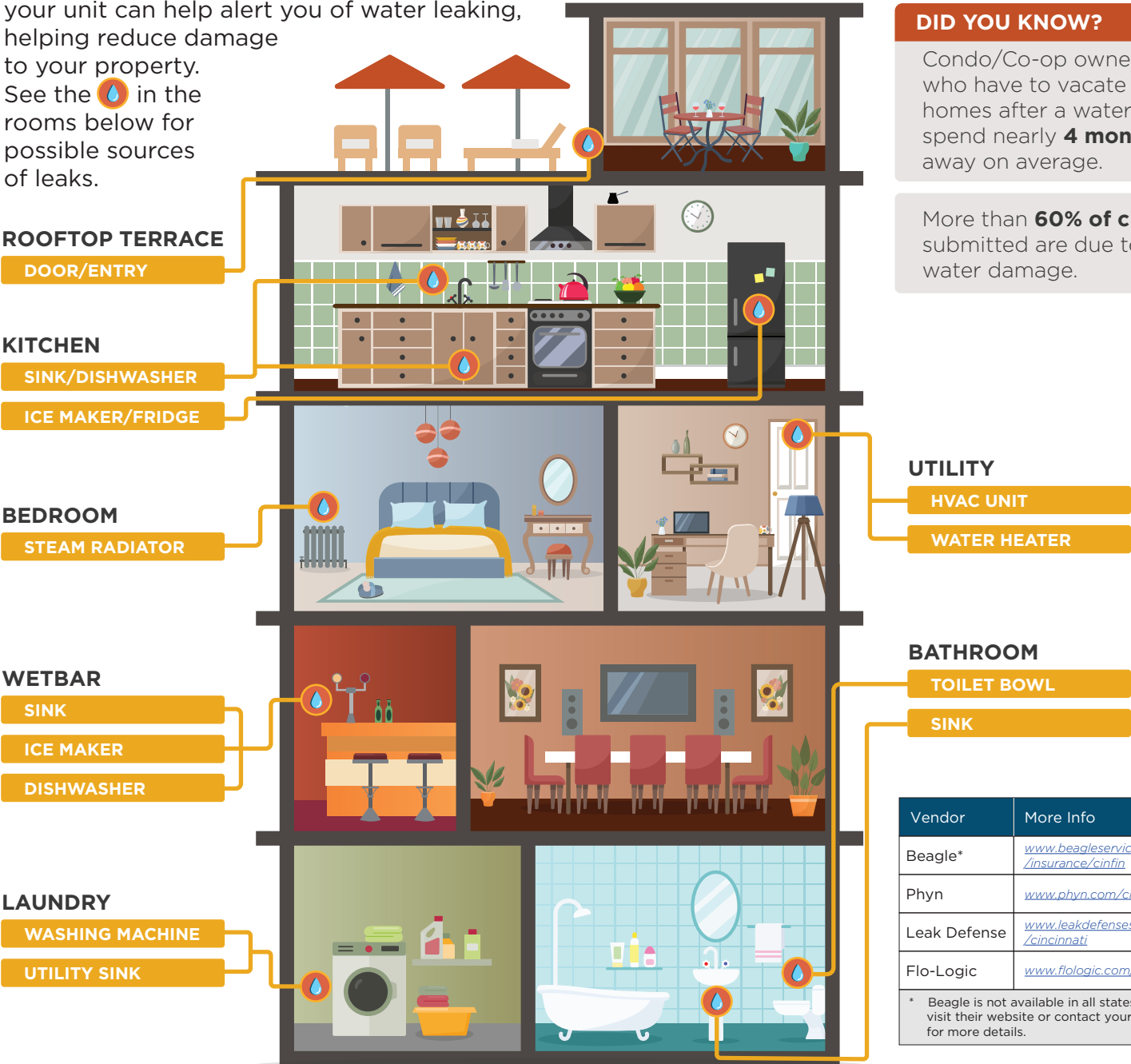


# WATER DETECTION SENSORS

Protect Your Condo/  
Co-op Against Leaks

**HEADS UP CONDOMINIUM and CO-OPERATIVE OWNERS:** No one likes to imagine water damage in their unit, but it happens all the time and often leads to inconvenient and expensive repairs not only for you but quite possibly for your neighbor. Your insurance policy may help cover the cost of damage, but your time is valuable, and irreplaceable belongings may be lost.

Having water sensors placed in critical areas of your unit can help alert you of water leaking, helping reduce damage to your property. See the  in the rooms below for possible sources of leaks.



## DID YOU KNOW?

Condo/Co-op owners who have to vacate their homes after a water loss spend nearly **4 months** away on average.

More than **60% of claims** submitted are due to water damage.

Vendor	More Info
Beagle*	<a href="http://www.beagleservices.com/insurance/cinfin">www.beagleservices.com/insurance/cinfin</a>
Phyn	<a href="http://www.phyn.com/cinfin">www.phyn.com/cinfin</a>
Leak Defense	<a href="http://www.leakdefensesystem.com/cincinnati">www.leakdefensesystem.com/cincinnati</a>
Flo-Logic	<a href="http://www.flologic.com/cincinnati">www.flologic.com/cincinnati</a>

\* Beagle is not available in all states. Please visit their website or contact your agent for more details.

Contact your local independent agent for questions about your insurance coverage.

<sup>1</sup> Statistics based on Cincinnati Insurance data collected between 2015 to 2022. This is not a policy. For a complete statement of the coverages and exclusions, please see the policy contract. Products are not available in all states. "The Cincinnati Insurance Companies", "Cincinnati Insurance" and "Cincinnati" refer to member companies of the insurer group providing property and casualty coverages through The Cincinnati Insurance Company or one of its wholly owned subsidiaries - The Cincinnati Indemnity Company or The Cincinnati Casualty Company. Each insurer has sole financial responsibility for its own products. Not all subsidiaries operate in all states. Do not reproduce or post online, in whole or in part, without written permission. © 2024 The Cincinnati Insurance Company, 6200 S. Gilmore Road, Fairfield, OH 45014-5141. Mailing address: P.O. Box 145496, Cincinnati, OH 45250-5496.

This loss control information is advisory only. Contact your local, independent insurance agent for coverage advice and policy service. © Copyright 2024 The Cincinnati Insurance Companies. All rights reserved. The selection of a particular service provider is the independent choice of the policyholder. Service providers are not affiliated with The Cincinnati Insurance Companies. Cincinnati and its employees make no warranties and assume no liability for services, products or loss control measures provided by service providers.

